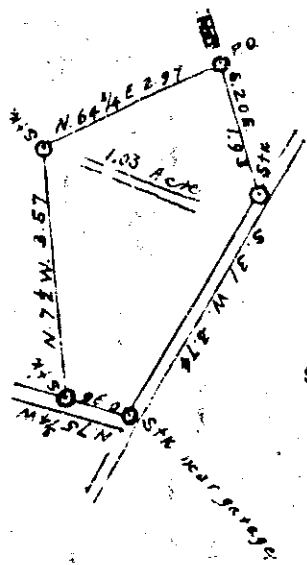
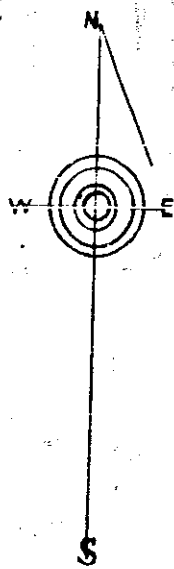


Plat Book I, Page 91A



Scale 2 1/2 chains = 1 inch

South Carolina
Greenville County

The above plat represents a tract or lot of land as surveyed by me for A. G. McKinney, for his son, & an H. McKinney, and contains one and three one hundredths acres more or less (1.03) it being a portion of a tract of 181 acres surveyed by E. C. Edens in Oct. 1918.

Surveyed this Feb. 18th 1938.

G. A. Ellis
Sur

FILED THIS 24 DAY OF Feb. 1938

AND RECORDED IN VOL. 1 PAGE 91.

Ollie Furnessworth

Register, Meigs Conveyance
Greenville County, S. C.

at 10:40 A.M.

2373.

BAD COPY